

1 **The response of the ozone layer to quadrupled CO₂ concentrations**

2 **(SUPPLEMENTARY MATERIAL)**

3 G. Chiodo* and L.M. Polvani

4 *Department of Applied Physics and Applied Mathematics,*

5 *Columbia University, New York, NY, USA*

6 D.R. Marsh

7 *National Center for Atmospheric Research,*

8 *Boulder, CO, USA*

9 A.Stenke

10 *Institute for Atmospheric and Climate Science, ETH, Zürich, Switzerland*

11 W.Ball and E.Rozanov

12 *Physikalisch-Meteorologisches Observatorium Davos - World Radiation Center, Davos,*

13 *Switzerland, and Institute for Atmospheric and Climate Science, ETH, Zürich, Switzerland*

14 S.Muthers

15 *Deutscher Wetterdienst, Research Center Human Biometeorology, Freiburg 79104, Germany*

16 K. Tsigaridis

17 *Center for Climate Systems Research, Columbia University, and NASA Goddard Institute for*
18 *Space Studies, New York, NY, USA.*

19 **Corresponding author address: G. Chiodo, Department of Applied Physics and Applied Mathe-*
20 *tics, 200 Seeley W. Mudd Building, 2nd floor, 500 West 120th Street, New York, NY, USA*
21 *E-mail: chiodo@columbia.edu*

ABSTRACT

22

23 **1. Supplementary Figures**

24 **List of Figures**

25 **Fig. S1.** Same as Fig 2, in ppmv. 6

26 **Fig. S2.** Difference between each model and the multi-model mean PI climatology, in ppmv. Line
27 contours show the multi-model mean climatological ozone distribution. 7

28 **Fig. S3.** Scatterplots of tropical average (30N-30S) response to $4\times\text{CO}_2$ in upper tropospheric tem-
29 perature at 300 hPa vs upwelling at 100 hPa in the four models. 8

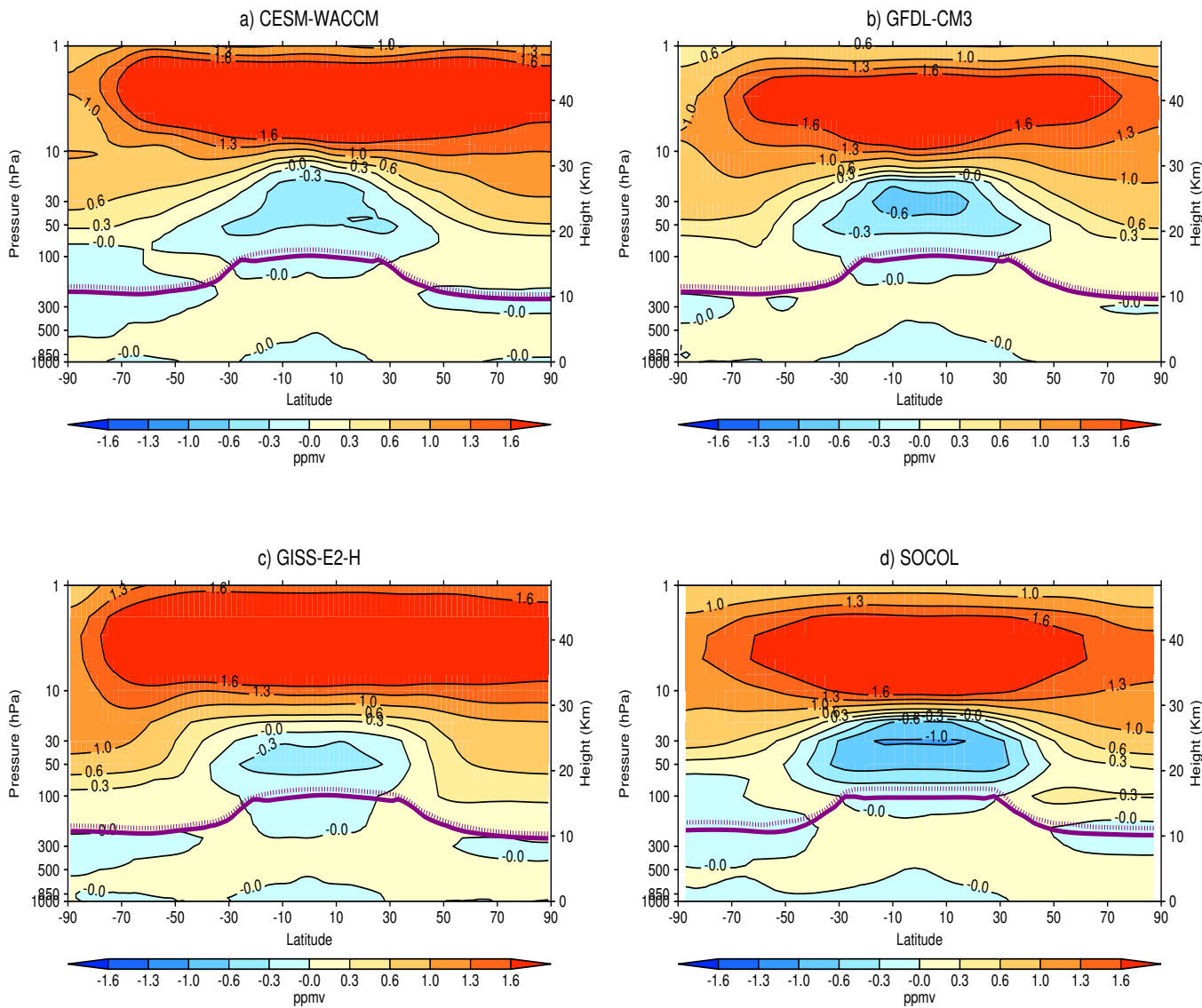
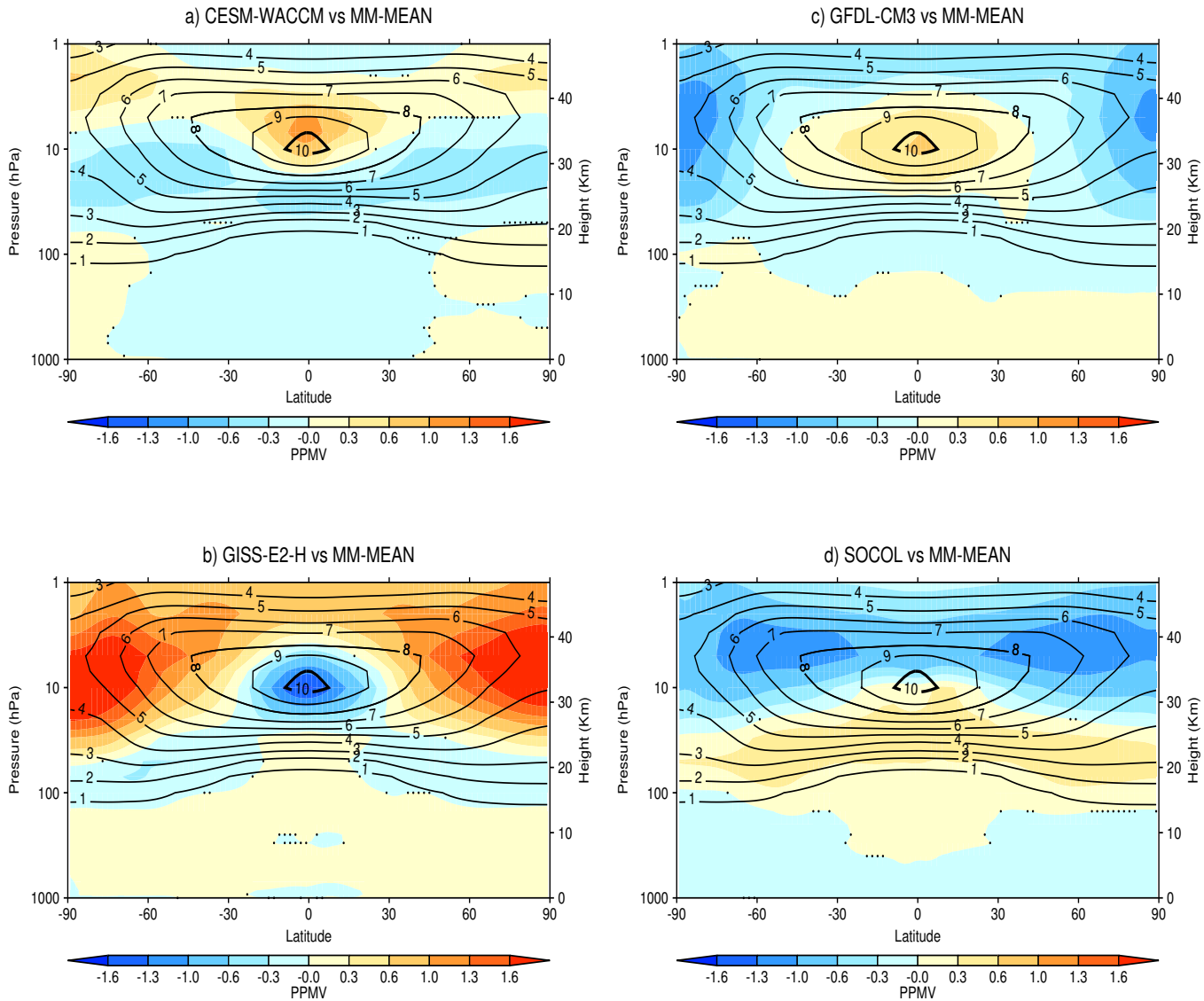
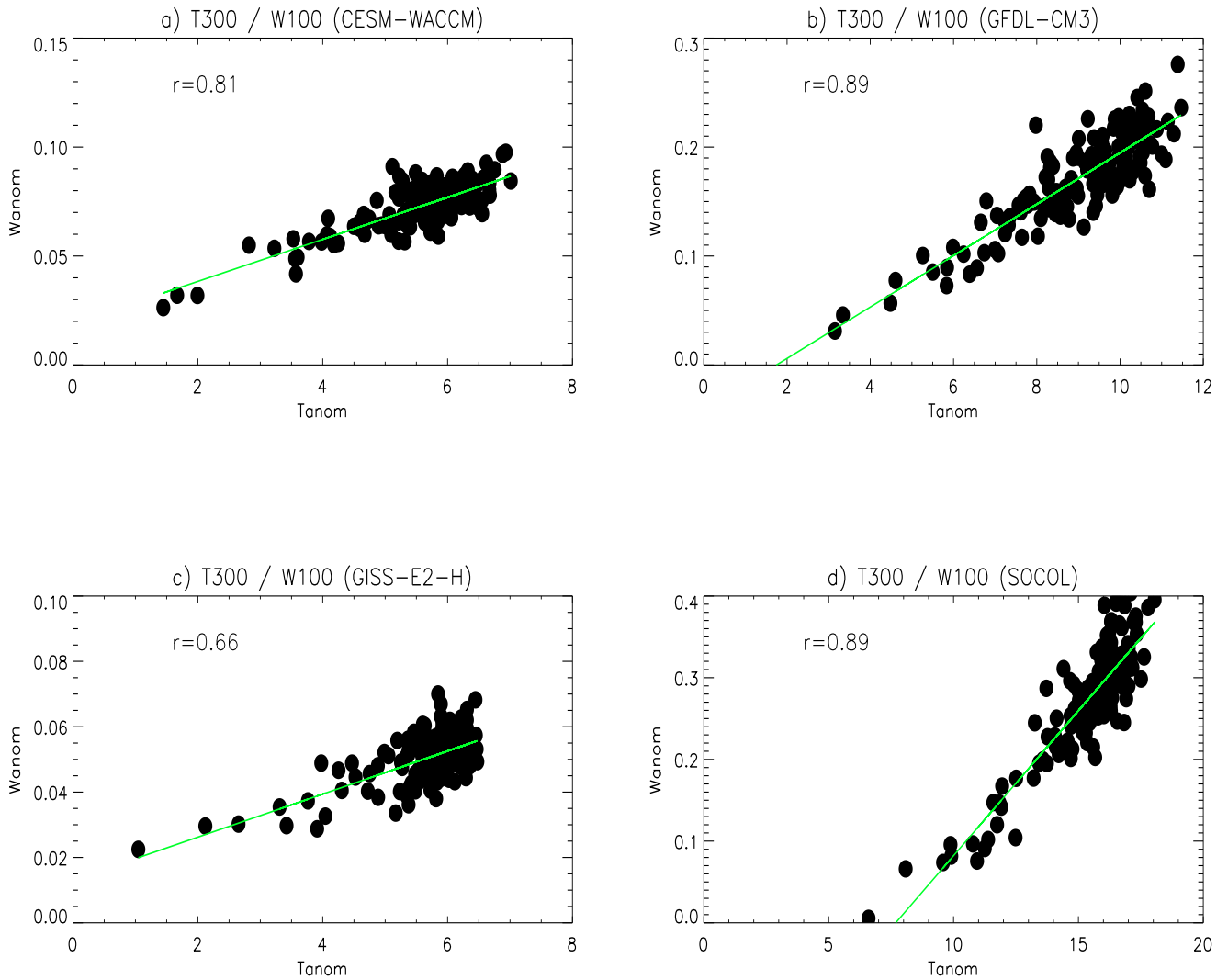


Figure S1. Same as Fig 2, in ppmv.



30 Figure S2. Difference between each model and the multi-model mean PI climatology, in ppmv. Line contours
 31 show the multi-model mean climatological ozone distribution.



32 Figure S3. Scatterplots of tropical average (30N-30S) response to $4\times\text{CO}_2$ in upper tropospheric temperature
 33 at 300 hPa vs upwelling at 100 hPa in the four models.