



AMS
American Meteorological Society

Supplemental Material

[© Copyright 2018 American Meteorological Society](#)

Permission to use figures, tables, and brief excerpts from this work in scientific and educational works is hereby granted provided that the source is acknowledged. Any use of material in this work that is determined to be “fair use” under Section 107 of the U.S. Copyright Act or that satisfies the conditions specified in Section 108 of the U.S. Copyright Act (17 USC §108) does not require the AMS’s permission. Republication, systematic reproduction, posting in electronic form, such as on a website or in a searchable database, or other uses of this material, except as exempted by the above statement, requires written permission or a license from the AMS. All AMS journals and monograph publications are registered with the Copyright Clearance Center (<http://www.copyright.com>). Questions about permission to use materials for which AMS holds the copyright can also be directed to the AMS Permissions Officer at permissions@ametsoc.org. Additional details are provided in the AMS Copyright Policy statement, available on the AMS website (<http://www.ametsoc.org/CopyrightInformation>).

1 **The response of the ozone layer to quadrupled CO₂ concentrations**

2 **(SUPPLEMENTARY MATERIAL)**

3 G. Chiodo* and L.M. Polvani

4 *Department of Applied Physics and Applied Mathematics,*

5 *Columbia University, New York, NY, USA*

6 D.R. Marsh

7 *National Center for Atmospheric Research,*

8 *Boulder, CO, USA*

9 W.Ball, A.Stenke, and E.Rozanov

10 *ETH, Zurich, Switzerland*

11 S.Muthers

12 *now at: Deutscher Wetterdienst, Research Center Human Biometeorology, Freiburg 79104,*

13 *Germany*

14 K. Tsigaridis

15 *Goddard Institute for Space Studies,*

16 *New York, NY, USA*

¹⁷ **Corresponding author address:* G. Chiodo, Department of Applied Physics and Applied Mathe-
¹⁸ matics, 200 Seeley W. Mudd Building, 2nd floor, 500 West 120th Street, New York, NY, USA
¹⁹ E-mail: chiodo@columbia.edu

ABSTRACT

20

²¹ **1. Supplementary Figures**

22 **List of Figures**

23 **Fig. S1.** Same as Fig 2, in ppmv. 6

24 **Fig. S2.** Difference between each model and the multi-model mean PI climatology, in ppmv. Line
25 contours show the multi-model mean climatological ozone distribution. 7

26 **Fig. S3.** Scatterplots of tropical average (30N-30S) response to $4\times\text{CO}_2$ in upper tropospheric tem-
27 perature at 300 hPa vs upwelling at 100 hPa in the four models. 8

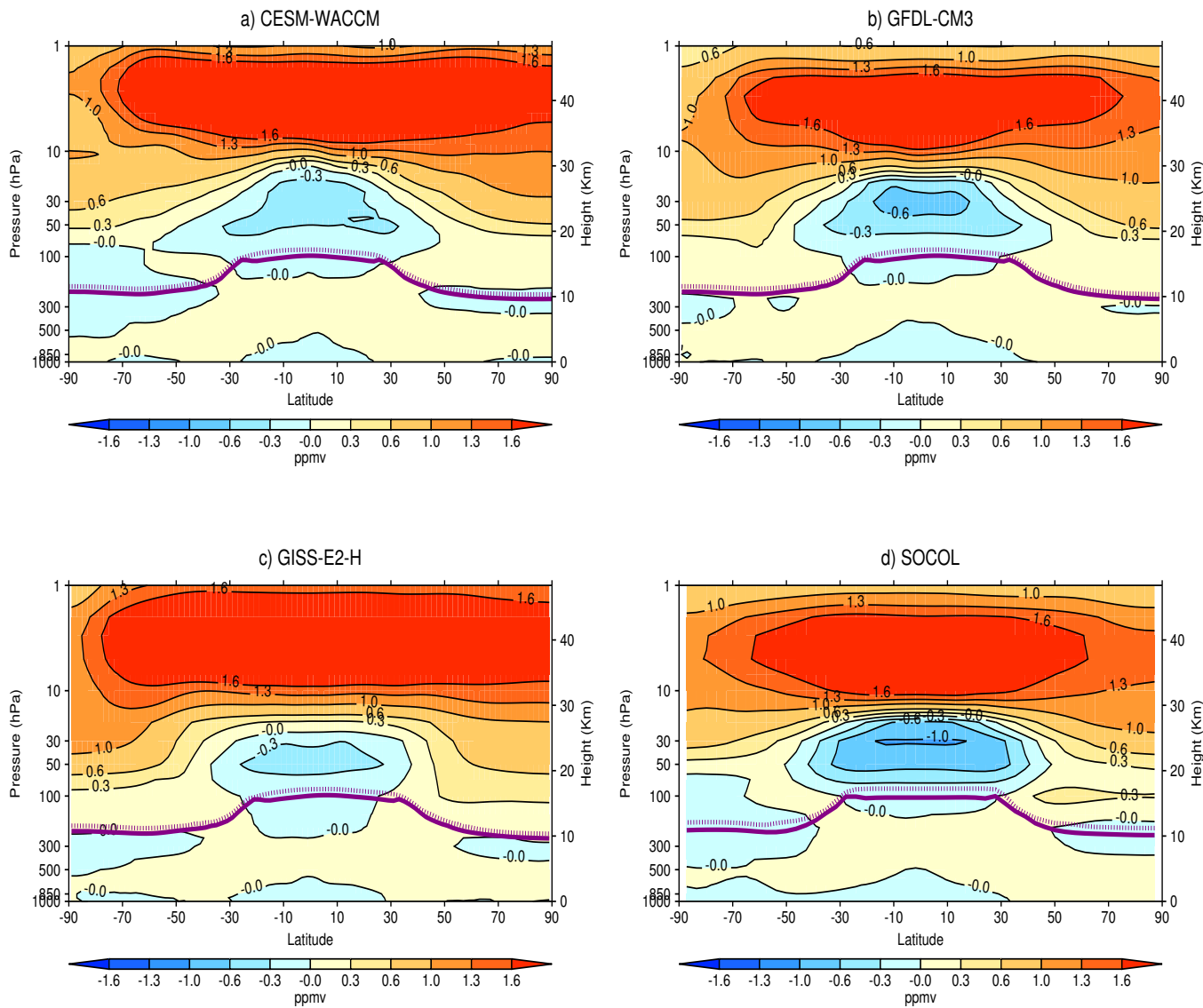
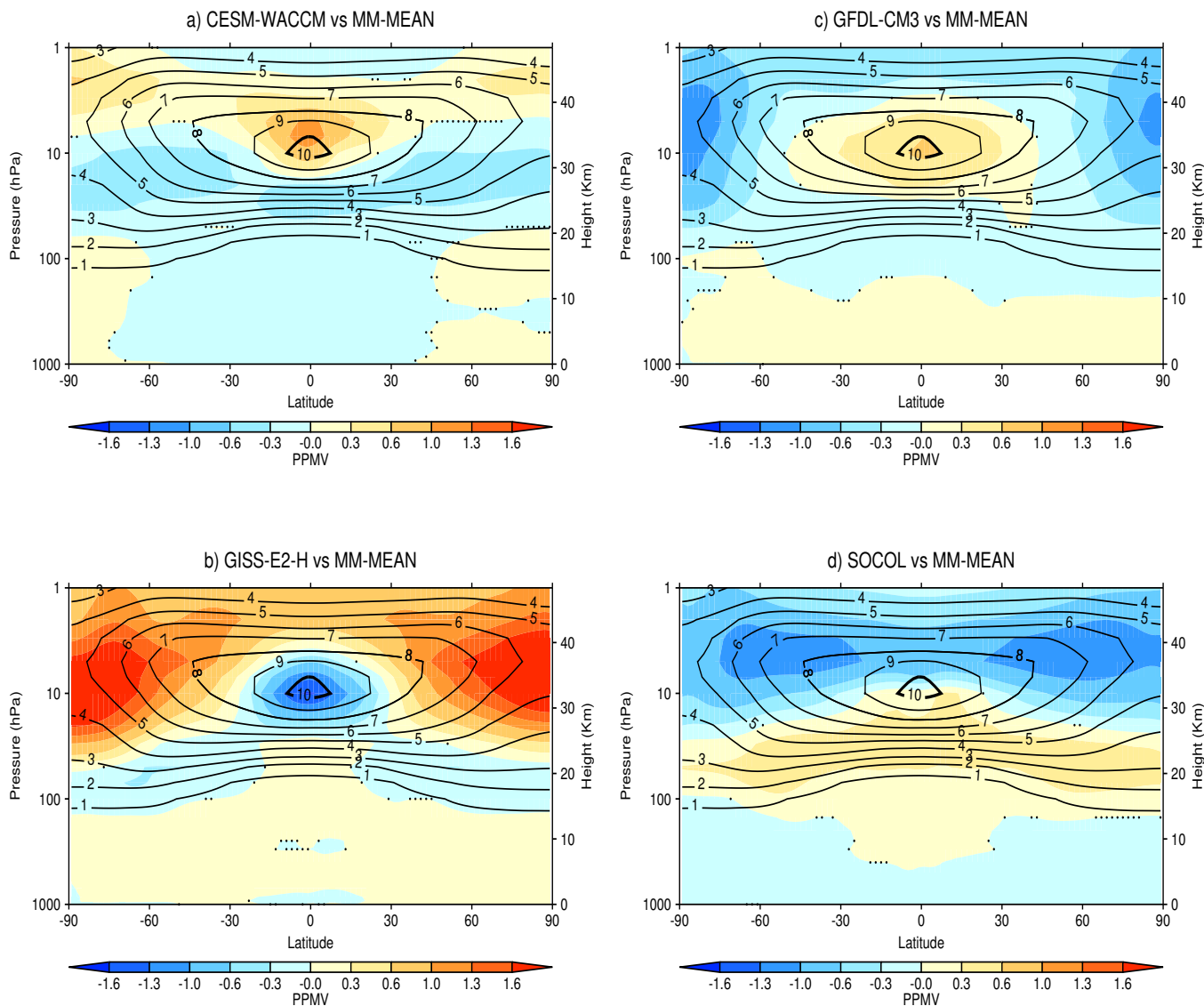
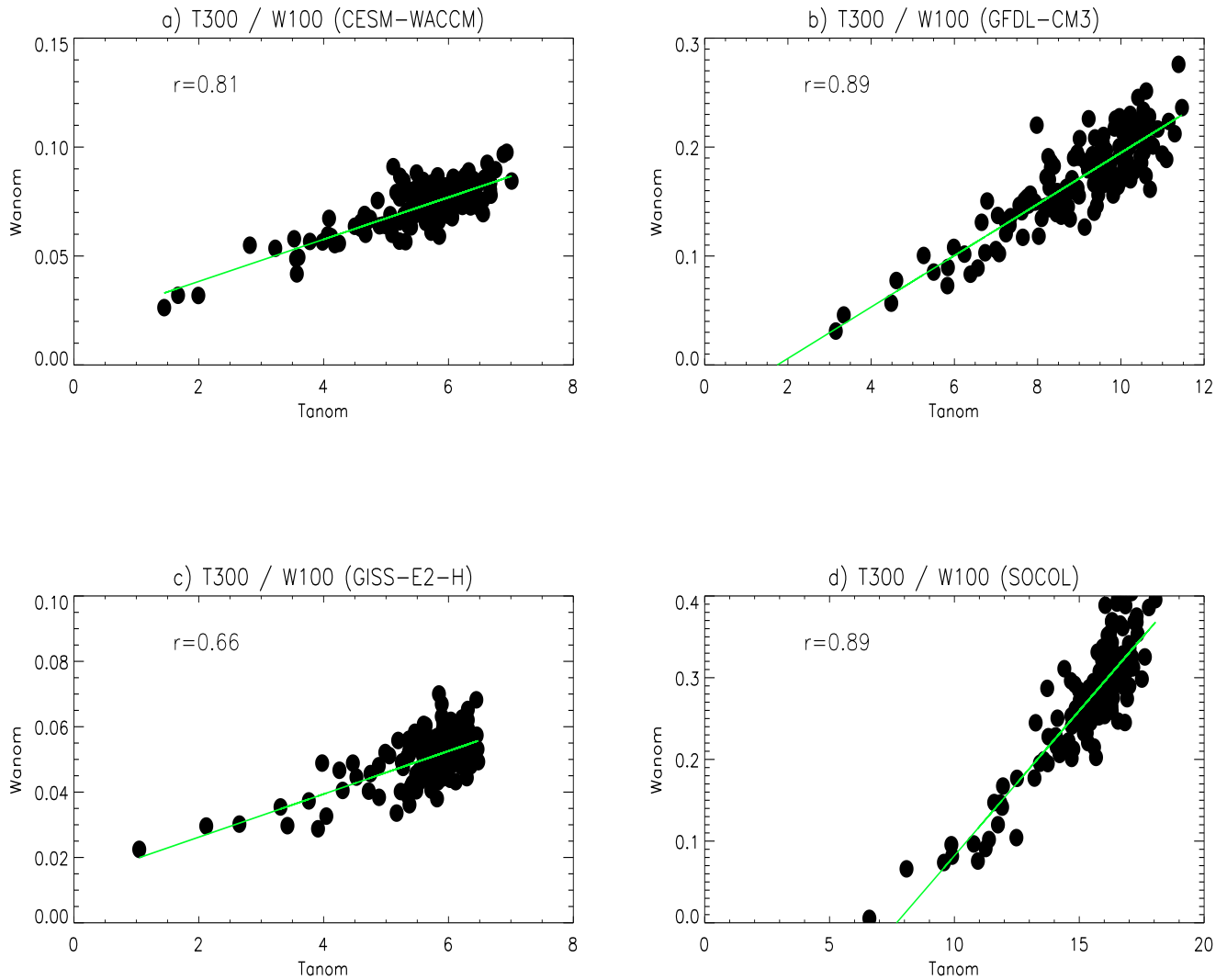


Figure S1. Same as Fig 2, in ppmv.



28 Figure S2. Difference between each model and the multi-model mean PI climatology, in ppmv. Line contours
 29 show the multi-model mean climatological ozone distribution.



30 Figure S3. Scatterplots of tropical average (30N-30S) response to $4\times\text{CO}_2$ in upper tropospheric temperature
 31 at 300 hPa vs upwelling at 100 hPa in the four models.